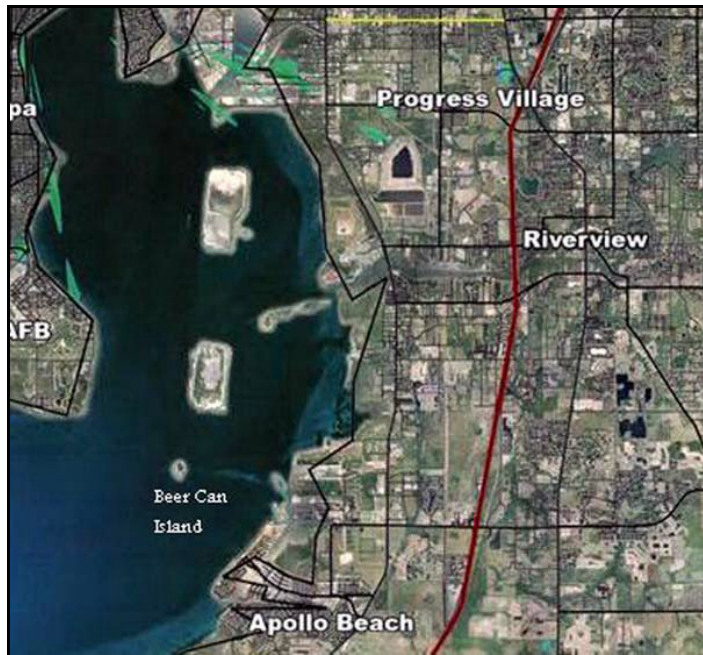


AHOY

All Captains and Mates

Mark your Calendars and Set your Compass or GPS for our **FIRST** Raftup of 2016 to **BEER CAN ISLAND**, Tampa Bay....



WHEN: Saturday, June 11, 2016

WHERE: "Beer Can" Island

- GPS: N274862 W822641
 - Approx 2 miles NW of Apollo Beach
 - Approx 2 miles SW of Alafia River
 - Approx 2 miles SE of MacDill AFB
 - Approx 3 miles S of Davis Island
 - Approx 11 miles from Gandy Bridge
 - Approx 11 miles from St. Pete Pier
- Boat Ramps: \$5 Ramp Fee*
 - *Alafia River (2) Williams Park (US-41) & Riverview Community Ctr (E. US-301)
 - Davis Island (**FREE**) - next to Yacht Club
- Phlock in the cove on the southeast side of the island, 6 to 12 foot depth.

TIME: 10am to Sunset (8:26 pm);

Tides: High: 9:06 am, Low: 2:22 pm

WHAT TO BRING: Side dish to share, beach shoes, BYOB, canopy/umbrella for shade, "floaties", chairs, beach gear, a couple of bucks to tip our musical guest.

CAPTAINS: Please email either Capt Bill Connolly [Csinc321@yahoo.com] or Capt Mark "Bernie" Lockhart [MSLockhart@aol.com] to let us know you will attend and the number of mates onboard so we can ensure a good "head" count for club provided food (burgers/hot dogs, buns, and condiments). Tables and grills to be coordinated with our fellow Captains by our hosting Pirate Captains Bill Connolly and Mark "Bernie" Lockhart - let us know if y'all have either one for our use.

Landlubber's Shuttle: (those TBPH members without a boat/watercraft or seat aboard one of the Captains boats). Capt Dave Becker [captdaveland@gmail.com] or phone 727-421-7559 will provide **LIMITED** shuttle service from Williams Park (9451 US-41 and Riverview Dr, next to Mosaic Fertilizer Processing Plant Gibsonton at the mouth of the Alafia River) - please contact him to make arrangements. This year we will be renting a large pontoon boat that can carry up to 12 persons with gear per trip, to do the shuttles. A \$10 per person (exact change or prepaid) non-refundable fee will be levied to cover the cost of the rental and gas. We will use the pontoon boat platform for our musical guest Mr. Rich McQuire to setup and play some tunes for us

FYI Note: there are no "head" (bathrooms) on island...