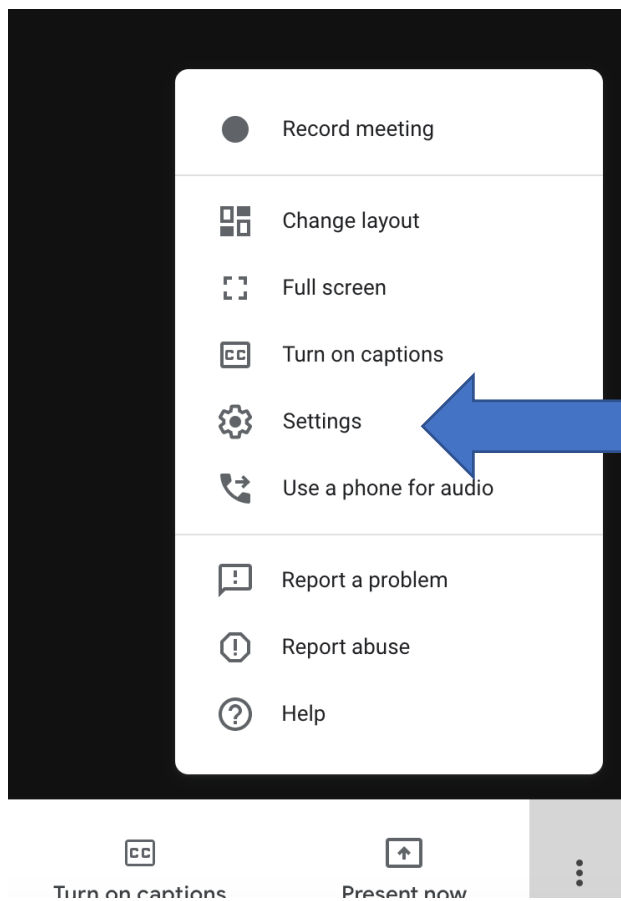


Google Meet Quick Access Setting

Hosts can turn "Quick access" on or off as often as they wish from Google Meet on the web once the meeting has started. **Note:** Hosts will not see the option to change this setting on mobile devices.

Open your Google Meet - Click on the three dots on lower right corner

Turn on Host Controls and shut off Quick Access



Turn on Host Control and turn off Quick Access

