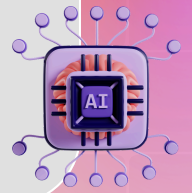




AI IN THE WINDSOR PUBLIC SCHOOLS

AI is a tool to enhance critical thinking and creativity —not replace it. We teach **AI Awareness** (Gr. K–2), **AI Literacy** (Gr. 3–8), and **AI Fluency** (Gr. 9–12) to prepare students for a world that is constantly changing.



DATA PRIVACY & RISKS



NEVER input confidential data: Do not enter Personally Identifiable Information, student grades, or other private data into public AI systems.

ALWAYS verify: AI can create inaccurate or false information ("hallucinations"). Critically check all AI-produced content for accuracy and bias.

ZERO TOLERANCE for intentional misuse: It is unacceptable to use AI to create discriminatory or harassing content or to use it in any way that violates school policy.



EXPECTATIONS FOR OUR LEARNING COMMUNITY



STAFF

- **Model Safe Use:** Use only district-approved tools. Be transparent when you use AI.
- **Clarify:** Communicate clear, assignment-specific AI rules.
- **Design:** Create assignments that require critical thinking AI cannot complete.

STUDENTS

- **Ask First:** Get teacher permission before using AI.
- **Use Productively:** Use AI for support (brainstorming, drafting, getting feedback).
- **Cite:** Acknowledge and cite the AI's use.

FAMILIES

- **Support Policy:** Reinforce safe and ethical use at home.
- **Engage:** Understand the role of AI in your child's education.
- **Communicate Concerns:** Share concerns about AI with the appropriate school staff.