

# AHOY

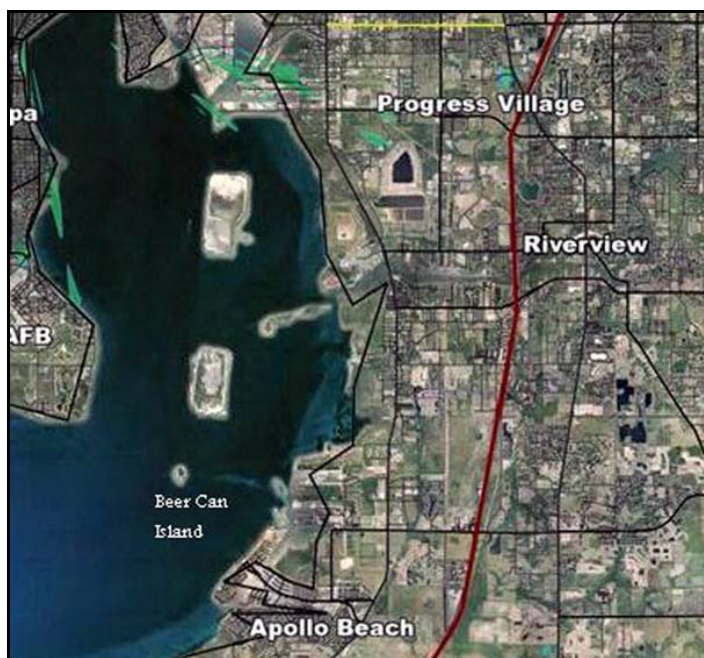
## All Captains and Mates

Mark your Calendars and Set your Compass or GPS for our **FIRST** Raftup of 2014 to **BEER CAN ISLAND**, Tampa Bay....

**WHEN:** Saturday, July 26, 2014

**WHERE:** "Beer Can" Island

- GPS: N274862 W822641
  - Approx 2 miles NW of Apollo Beach
  - Approx 2 miles SW of Alafia River
  - Approx 2 miles SE of MacDill AFB
  - Approx 3 miles S of Davis Island
- Boat Ramps: \$5 Ramp Fee\*
  - \*Alafia River (2) Williams Park (US-41) & Riverview Community Ctr (E. US-301)
  - Davis Island (**FREE**) - next to Yacht Club
  - \*Gandy Ramp - Tampa side
- Phlock in the cove on the southeast side of the island, 6 to 12 foot depth.



**TIME:** 10am to Sunset (8:23pm); Tides: Low: 8:07am, High: 2:02pm

**WHAT TO BRING:** Side dish to share, beach shoes, BYOB, canopy/umbrella for shade, "floaties", chairs, sunscreen, beach gear.

**CAPTAINS:** Please email either Capt Bill Connolly [bconnol2@verizon.net] or Capt Mark "Bernie" Lockhart [MSLockhart@aol.com] to let us know you will attend and the number of mates onboard so we can ensure a good "head" count for club provided food. Tables and grills to be coordinated with our fellow Captains by our hosting Pirate Captains Bill Connolly and Mark "Bernie" Lockhart - let us know if y'all have either one.

**Landlubber's Shuttle:** (those TBPH members without a boat/watercraft or seat aboard one of the Captains boats). Capt Bill Connolly [bconnol2@verizon.net] or phone 813-545-3584 will provide LIMITED shuttle service from Apollo Beach Park - please contact him to make arrangements.

FYI Note: there are no "head" (bathrooms) on island...